

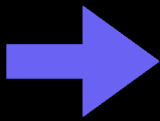
LIVING SQUAD JANUARY



WATCH FOR WINTER FLOCKS OF
CARDINALS AT YOUR FEEDERS. OBSERVE
HOW MALES ARE DOMINANT.

FUN FACT: MALES SING LOUDLY
TO SAY: "THIS IS MY YARD!"

PROVIDE OPEN WATER WITH HEATED BIRD BATHS
THIS WAY BIRDS CAN HAVE CLEAN AND WELL-
OILED WEATHERS TO SURVIVE COLD WINTER
TEMPERATURES.



TRY THIS: COUNT HOW MANY CARDINALS
YOU SEE IN ONE DAY.

WHAT DID YOU SEE?



LIVING SQUAD FEBRUARY

LISTEN FOR GREAT HORNED OWLS
CALLING AS PAIRING AND NESTING
BEGINS.

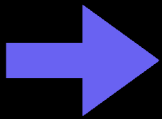


FUN FACT: THEY HAVE BIG, FEATHERED
“HORNS” (THAT AREN’T REALLY HORNS!)
AND CAN TURN THEIR HEADS ALMOST
ALL THE WAY AROUND.

THESE TINY BIRDS ARRIVE IN FRIENDLY FLOCKS AND
ARE FAMOUS FOR THEIR “CHICK-A-DEE-DEE-DEE” CALL,
WHICH THEY’RE NAMED AFTER!

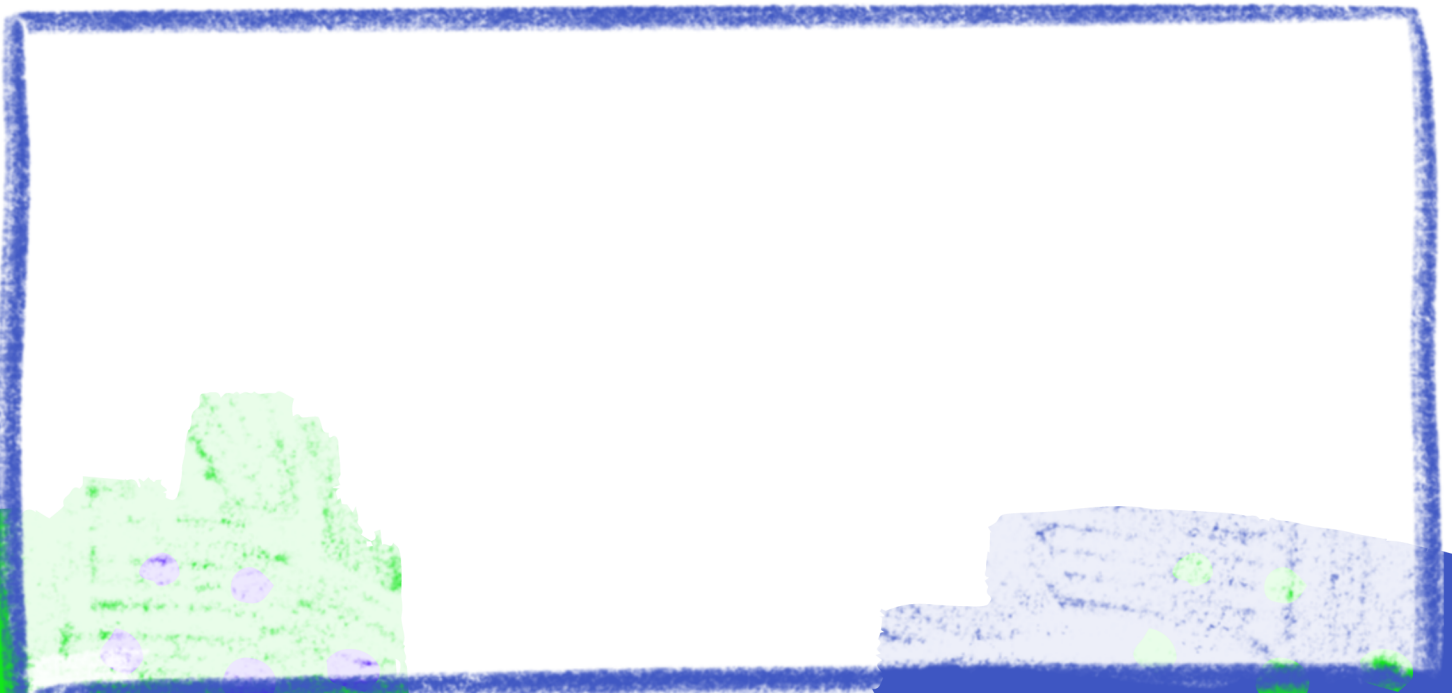


TRY THIS: GO OUTSIDE AT NIGHT AND
LISTEN FOR THEIR DEEP “HOO-HOO-HOO”
CALLS.



TRY THIS: PUT OUT SUNFLOWER SEEDS AND
SEE HOW MANY CHICKADEES COME TO
VISIT.

WHAT DID YOU SEE?



LIVING SQUAD FEBRUARY

IN EARLY SPRING, MALE BLUEBIRDS SEARCH FOR THE BEST NESTING SPOTS TO IMPRESS THE FEMALES.

FUN FACT: MALE BLUEBIRDS DON'T JUST SING TO IMPRESS — THEY ALSO BRING BITS OF GRASS OR PINE NEEDLES INTO A NEST BOX TO SHOW THE FEMALE WHAT A GREAT HOMEBUILDER THEY ARE!



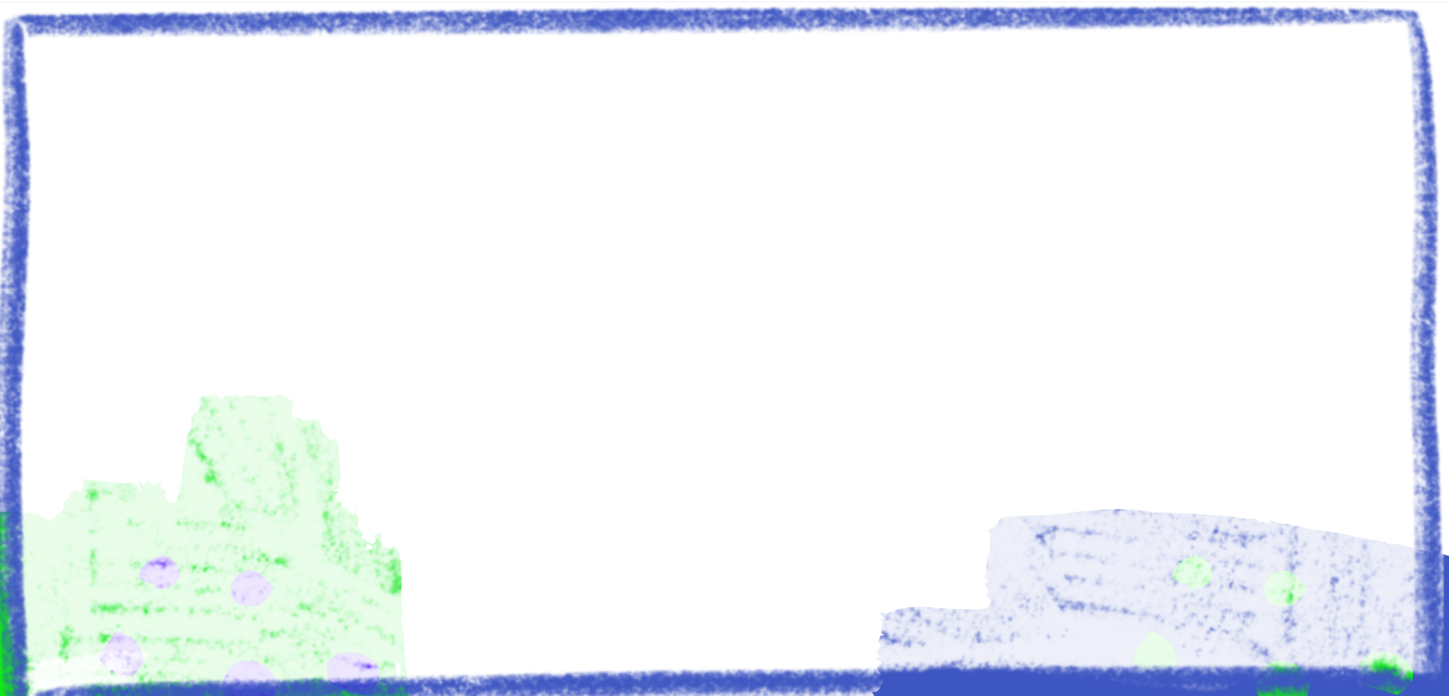
WATERFOWL START BUILDING THEIR NESTS NEAR PONDS AND LAKES.



TRY THIS: LOOK FOR A MALE WITH BRIGHT BLUE FEATHERS SITTING ON A FENCE OR BRANCH, SINGING TO CLAIM HIS HOME.

TRY THIS: VISIT A SAFE VIEWING SPOT NEAR WATER AND SEE IF YOU CAN SPOT A NEST OR A PAIR SWIMMING TOGETHER.

WHAT DID YOU SEE?



LIVING SQUAD

MARCH

MALES RED-WINGED BLACKBIRD FLASH THEIR BRIGHT RED-AND-YELLOW SHOULDER PATCHES TO DEFEND THEIR TERRITORY AND ATTRACT FEMALES.

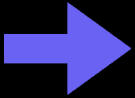
FUN FACT: THEIR LOUD “CONK-LA-REE!” SONG IS ONE OF THE FIRST SIGNS OF SPRING IN MANY AREAS.



FEMALE ROBINS ARE THE NEST BUILDERS — THEY WEAVE GRASS, TWIGS, AND MUD INTO A COZY CUP FOR THEIR EGGS.

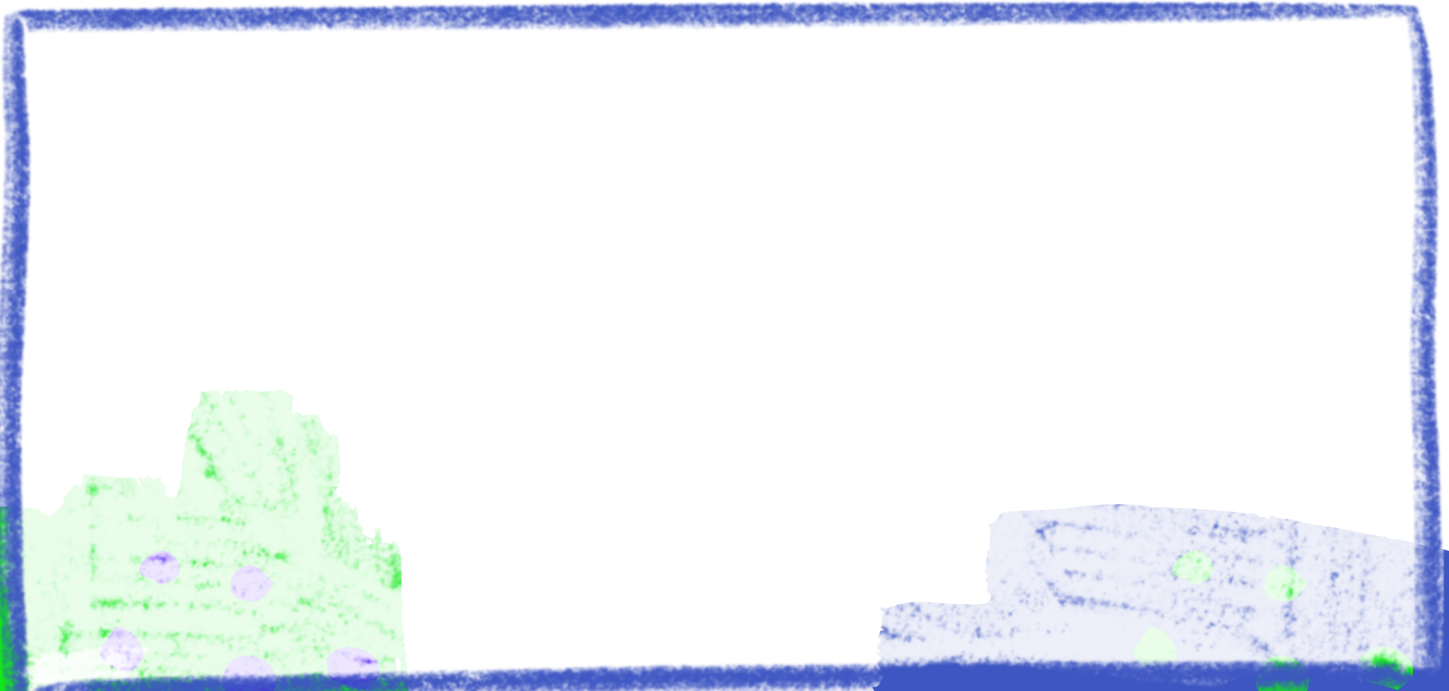


TRY THIS: LISTEN NEAR MARSHES OR OPEN FIELDS FOR THEIR CALL AND SEE IF YOU CAN SPOT THAT BRIGHT RED PATCH.



TRY THIS: WATCH A ROBIN GATHERING NESTING MATERIALS AND SEE IF YOU CAN SPOT WHERE SHE’S BUILDING HER HOME.

WHAT DID YOU SEE?



LIVING SQUAD

MARCH

CHIPPING SPARROW ARE TINY BROWN-AND-GRAY BIRDS WEAR A RUSTY-RED CAP IN SPRING AND SUMMER.

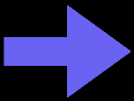
FUN FACT: THEIR SONG IS A FAST, STEADY "CHIP-CHIP-CHIP," WHICH IS HOW THEY GOT THEIR NAME.



MALES TURN BRIGHT YELLOW WITH BLACK CAPS, WHILE FEMALES KEEP SOFTER YELLOW-BROWN FEATHERS. GOLDFINCHES ARE ONE OF THE LATEST BIRDS TO NEST — OFTEN WAITING UNTIL MID-SUMMER WHEN THISTLE SEEDS ARE READY.

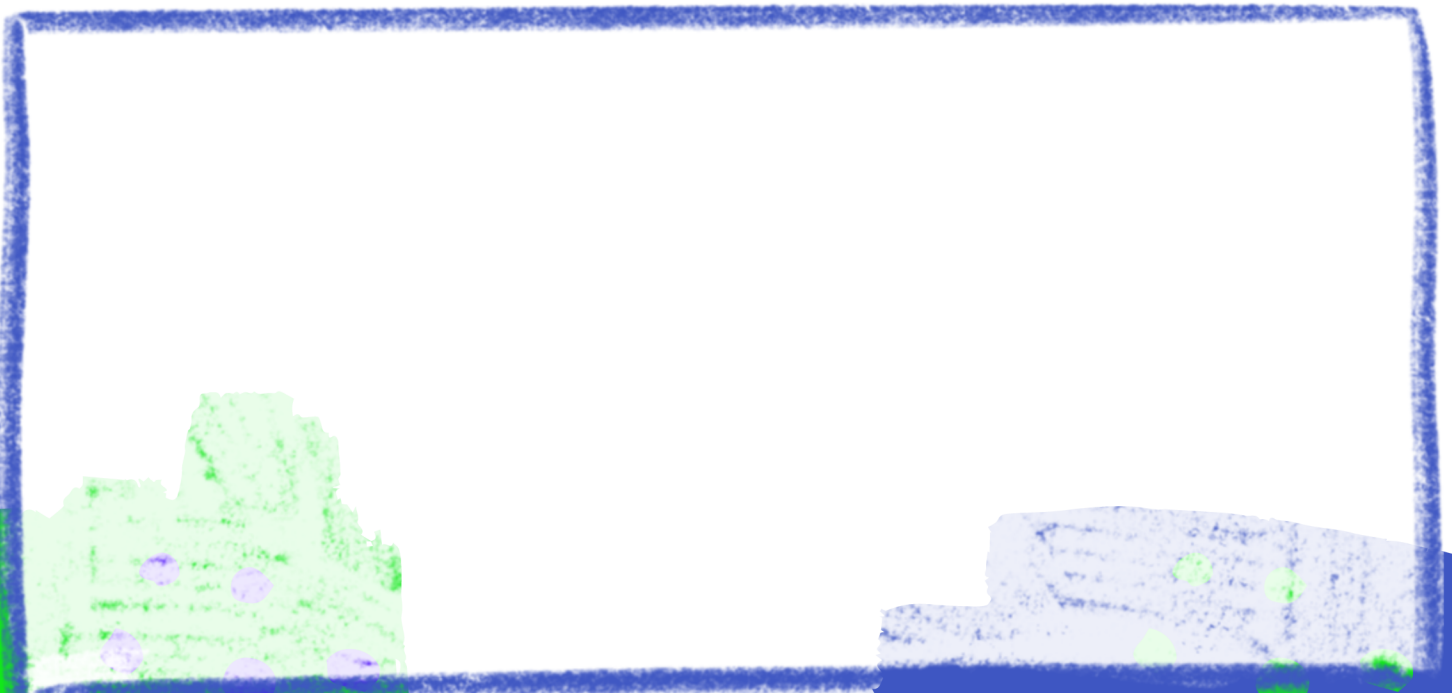


TRY THIS: LISTEN IN OPEN FIELDS OR BACKYARDS FOR THEIR CHIPPING CALL AND SEE IF YOU CAN SPOT THAT RED CAP.



TRY THIS: PUT OUT A FEEDER WITH SUNFLOWER OR THISTLE SEEDS AND COUNT HOW MANY GOLDFINCHES VISIT.

WHAT DID YOU SEE?



LIVING SQUAD

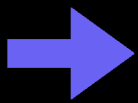
APRIL

GOLDFINCHES COMPLETE THEIR TRANSITION TO BRIGHT SUMMER YELLOW PLUMAGE, WITH MALES SHOWING OFF A VIVID BLACK CAP.



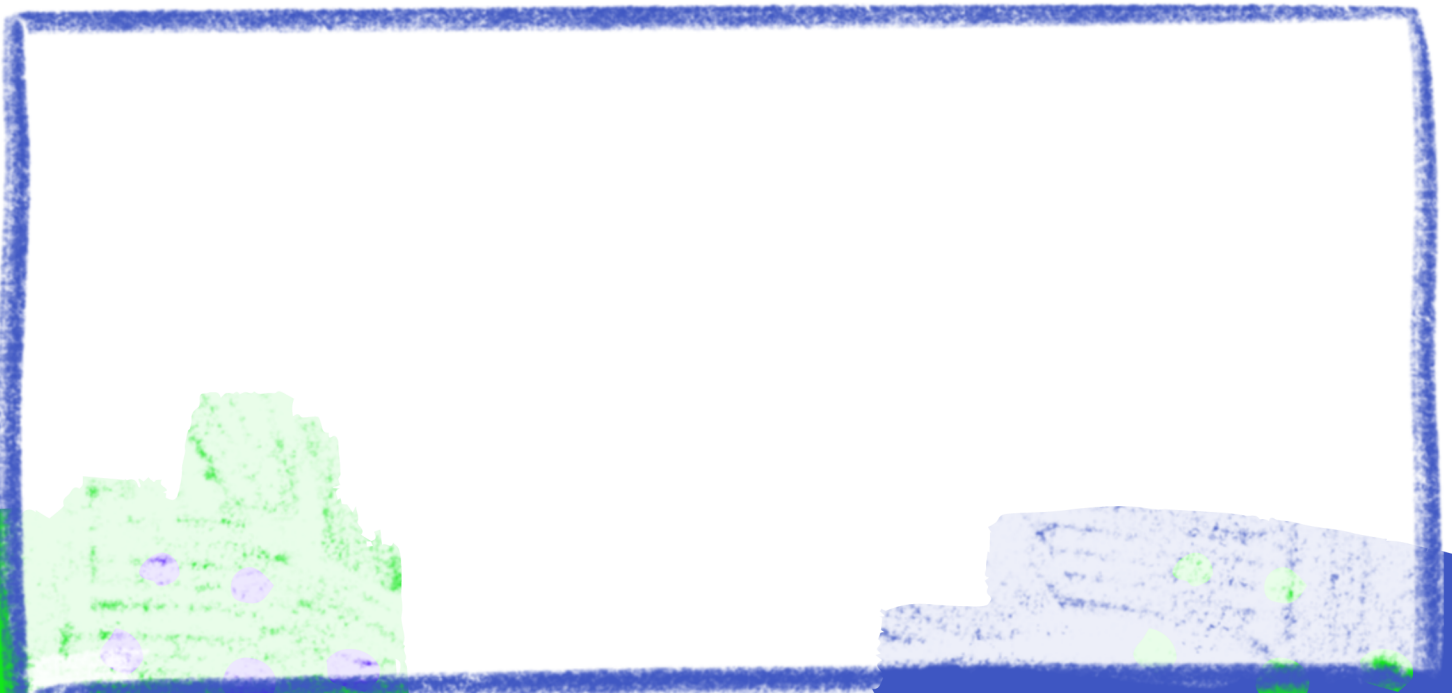
FUN FACT: HUMMINGBIRDS' WINGS BEAT SO FAST—UP TO 80 TIMES PER SECOND—THAT THEY CAN HOVER LIKE TINY HELICOPTERS.

BY MIDSUMMER, HUMMINGBIRDS ARE BUSY VISITING FLOWERS AND FEEDERS TO FUEL UP FOR MIGRATION.



TRY THIS: SIT QUIETLY NEAR FLOWERS OR A FEEDER AND WATCH FOR A HUMMINGBIRD'S QUICK STOP-AND-GO FLIGHT.

WHAT DID YOU SEE?



LIVING SQUAD

APRIL

IN SPRING, MALE WILD TURKEYS GOBBLE LOUDLY TO ATTRACT MATES AND SHOW OFF THEIR FAN-SHAPED TAILS.

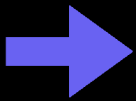
FUN FACT: A TURKEY'S GOBBLE CAN BE HEARD UP TO A MILE AWAY!



MALE INDIGO BUNTINGS TURN A BRILLIANT BLUE IN SUMMER, WHILE FEMALES STAY BROWN TO BLEND IN WITH THEIR SURROUNDINGS. THESE BIRDS MIGRATE AT NIGHT, USING THE STARS TO FIND THEIR WAY.

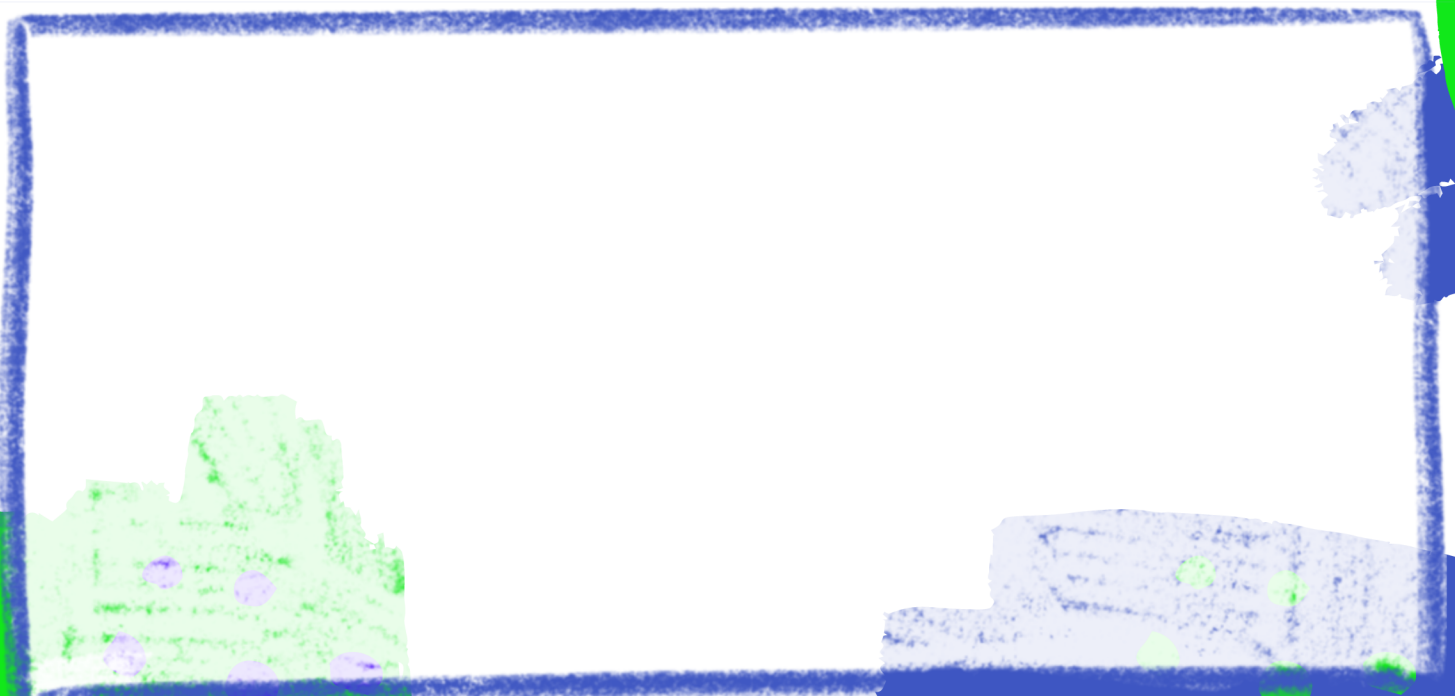


TRY THIS: LISTEN IN THE MORNING FOR THEIR GOBBLE AND SEE IF YOU CAN SPOT A MALE DISPLAYING HIS FEATHERS.



TRY THIS: LOOK FOR A BRIGHT BLUE MALE SINGING FROM A TREETOP OR FENCE POST ON A SUNNY DAY.

WHAT DID YOU SEE?



LIVING SQUAD

MAY

MALE SCARLET TANAGERS GLOW BRIGHT RED WITH BLACK WINGS IN SUMMER, WHILE FEMALES ARE YELLOW-GREEN FOR CAMOUFLAGE.

FUN FACT: THESE BIRDS SPEND MOST OF THEIR TIME HIGH IN THE FOREST CANOPY, MAKING THEM TRICKY TO SPOT.



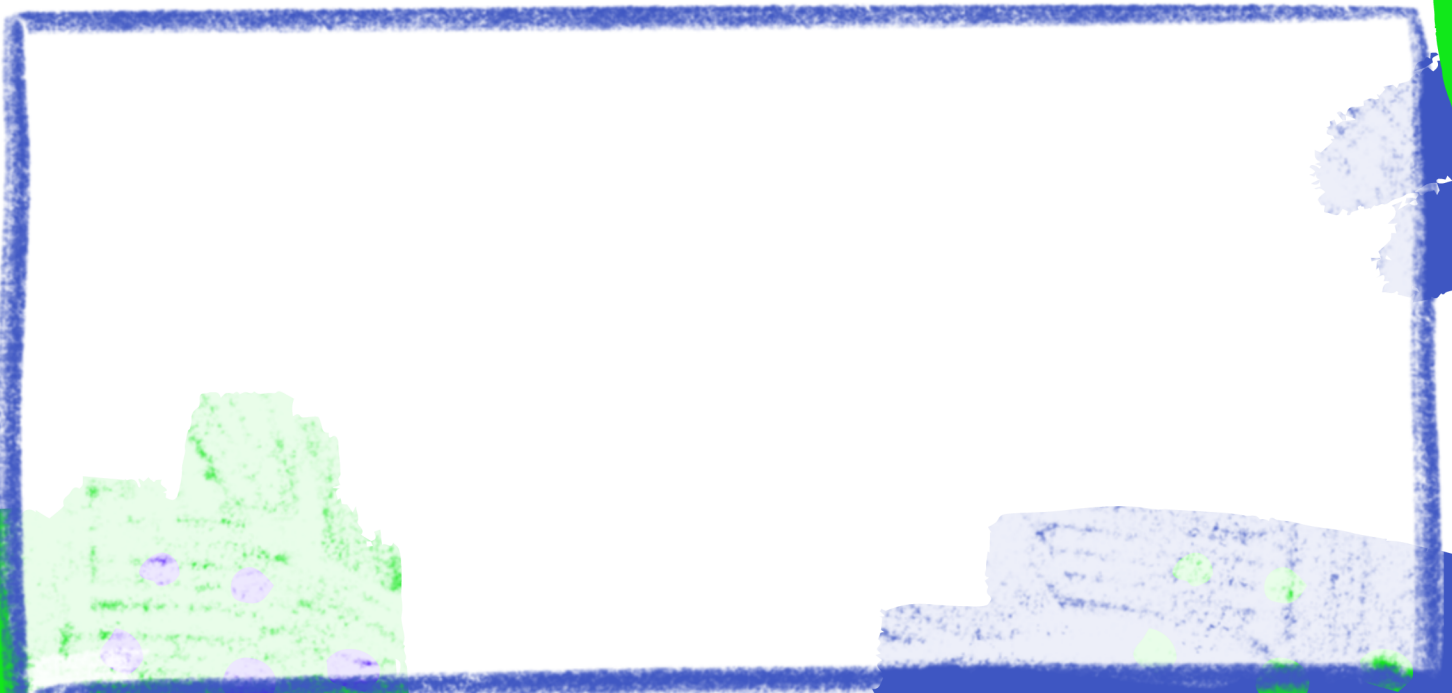
MALES HAVE BLACK-AND-WHITE FEATHERS WITH A BRIGHT RED CHEST, WHILE FEMALES ARE BROWN WITH WHITE STREAKS. THEIR SONG SOUNDS LIKE A ROBIN THAT'S TAKEN VOICE LESSONS — SWEETER AND MORE MUSICAL.

TRY THIS: LOOK UP INTO TALL TREES FOR A FLASH OF RED OR YELLOW MOVING AMONG THE LEAVES



TRY THIS: LISTEN FOR THEIR RICH, WHISTLED SONG AND SEE IF YOU CAN SPOT THAT SPLASH OF RED IN THE TREES.

WHAT DID YOU SEE?



LIVING SQUAD

JUNE

ROSE-BREADED GROSBEAKS ARE
NESTING AND VISITING FEEDERS



HANG A HUMMBUG FRUIT FLY FEEDER IN
A SHADY LOCATION FOR YOUR
HUMMINGBIRDS.

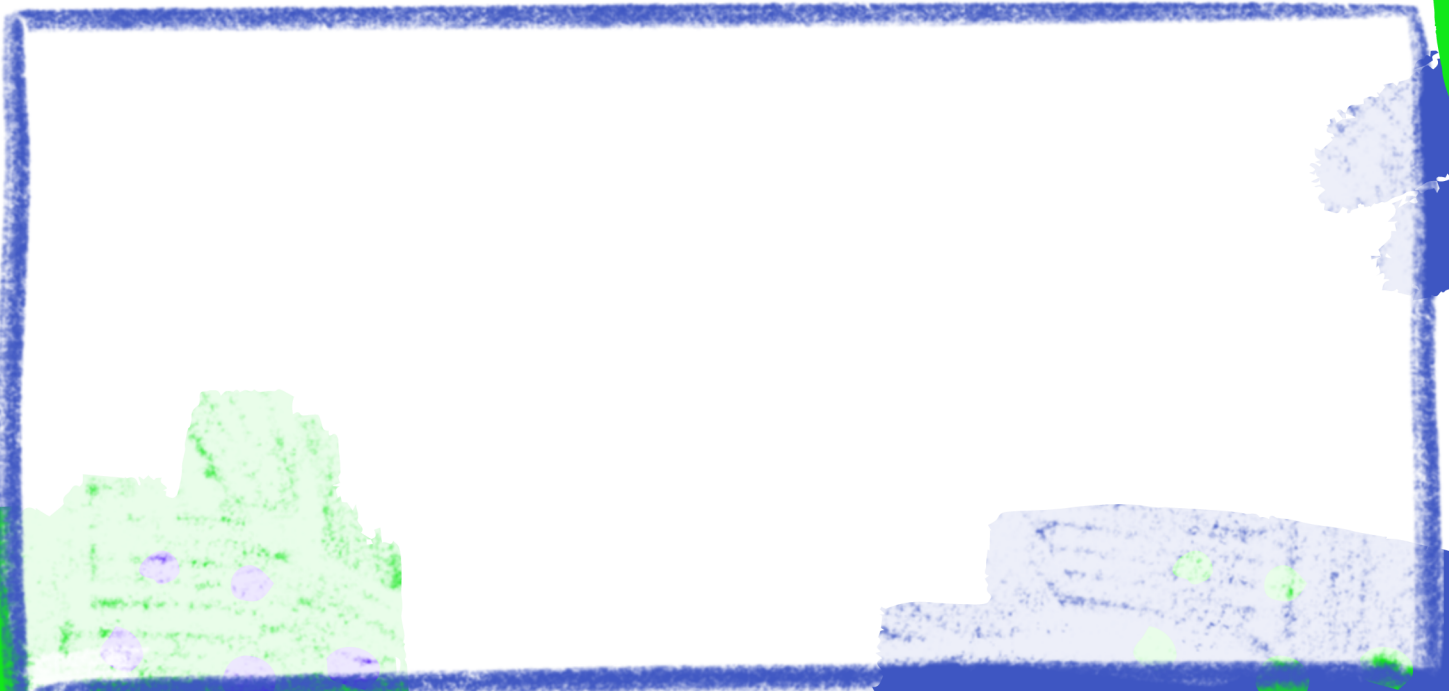


KEEP YOUR FEEDERS FULL AND WATCH FOR
CARDINAL FLEDGLINGS MAKING THEIR FIRST
FEEDER VISIT. EASY TO SPOT WITH THEIR
UNSTEADY FLIGHT AND MOTTLED FEATHERS.



BLUEBIRDS MAY NEST 2-3 TIMES IN ONE SEASON.
CLEAN OUT YOUR BLUEBIRD BOXES AS SOON AS
THE LAST BROOD HAS FLEDGED—OR AFTER A
FAILED NEST—TO MAKE THEM AVAILABLE AGAIN
RIGHT AWAY.

WHAT DID YOU SEE?



LIVING SQUAD

JULY

OBSERVE NON-FEEDER BIRDS LIKE:

ROBINS



CATBIRDS



BLUEBIRDS



THRUSHES



WARBLERS



KEEP YOUR
FEEDERS FULL,
FRESH, AND
CLEAN.

HANG ANOTHER
FEEDER OUT OF SIGHT
OF THE FIRST ONE SO
FEMALES AND YOUNG
BIRDS CAN FEED
WITHOUT BEING
CHASED OFF BY THE
DOMINANT MALE.



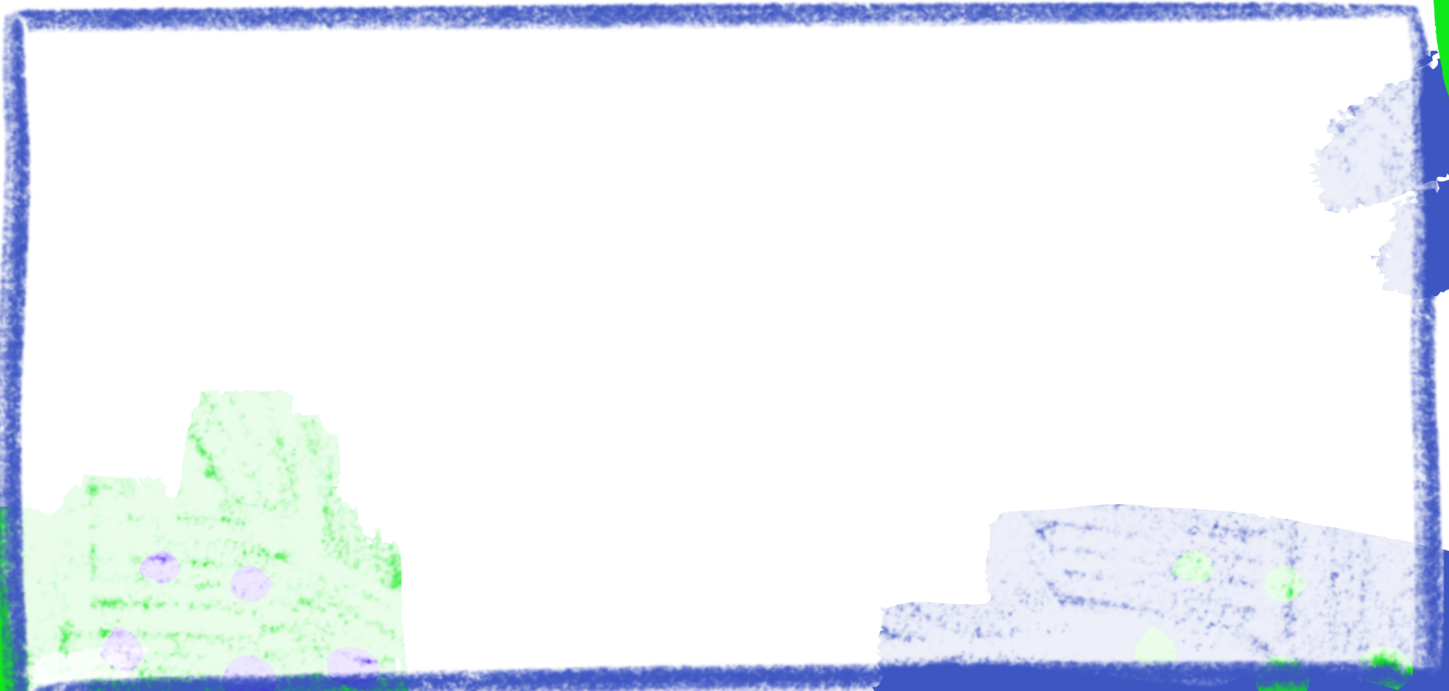
HUMMINGBIRD
POPULATIONS
INCREASE
DRAMATICALLY
OVER THE COURSE
OF THE SUMMER.

GOLDFINCHES NEST
LATE SO THEY CAN
FEED THEIR CHICKS
FRESH THISTLE SEEDS.

KEEP BIRD NESTING
MATERIALS AVAILABLE
FOR ANY BIRDS
STARTING A SECOND
BROOD, AND KEEP YOUR
FINCH FEEDERS FULL
DURING THIS SEASON.



WHAT DID YOU SEE?



LIVING SQUAD

AUGUST

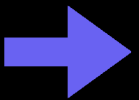
MIGRATORY BIRDS LIKE ORIOLES AND GROSBEAKS COMPLETE THEIR NESTING AND BEGIN MOVING TO THEIR WINTER FEEDING GROUNDS IN TROPICAL RAINFORESTS

KEEP YOUR BIRDBATHS AND HUMMINGBIRD FEEDERS CLEAN AND FRESH, ESPECIALLY IF DRYER WEATHER PREVAILS.



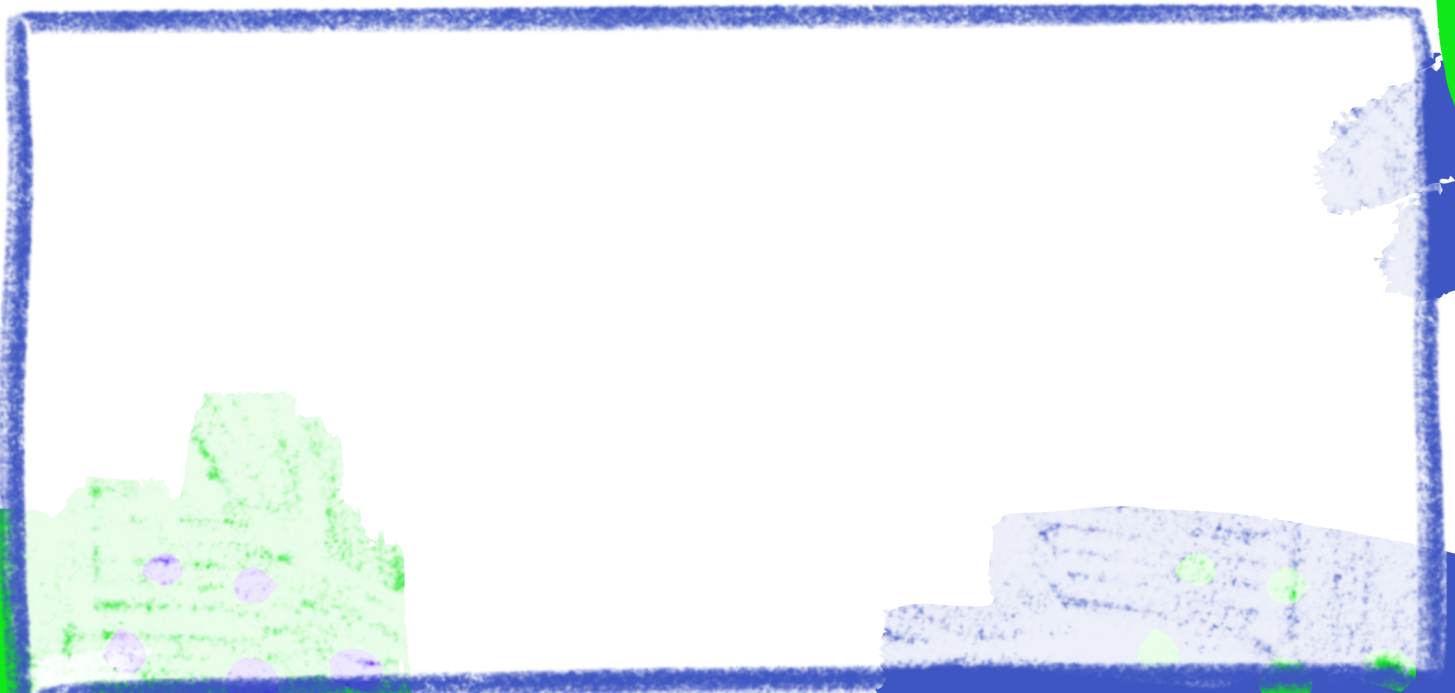
WATCH FOR NATURAL FEEDING ON FRUITS AND BERRIES AS THESE WILD FOOD CROPS MATURE.

MANY BIRDS CONTINUE HEAVY FEEDING AT PLATFORM FEEDERS THIS SEASON. JUVENILE CARDINALS LOOK BROWN WITH ORANGE BEAKS UNTIL THEY MOLT INTO THEIR BRIGHT RED ADULT PLUMAGE. TOGETHER.



TRY THIS: SET UP A PLATFORM FEEDER WITH SUNFLOWER SEEDS AND WATCH FOR BOTH ADULTS AND YOUNG BIRDS VISITING TOGETHER.

WHAT DID YOU SEE?



LIVING SQUAD

SEPTEMBER

GOLDFINCHES BEGIN THEIR FALL MOLT, CHANGING TO WINTER DRAB PLUMAGE. MIGRATORY BIRDS FORM FALL FLOCKS

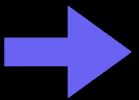


PURPLE MARTINS HAVE FINISHED NESTING AND DEPART EARLY IN SEPTEMBER



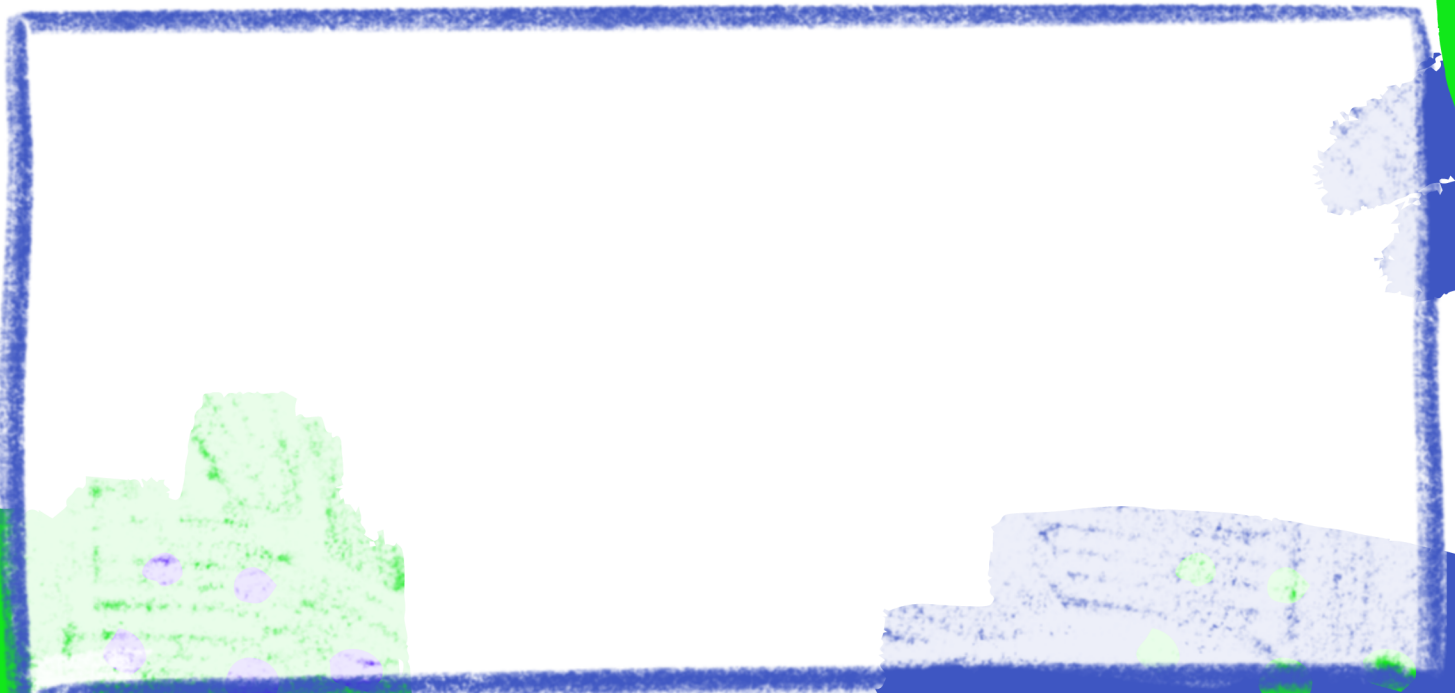
BRING IN OR INVERT AND COVER YOUR SUMMER BIRD BATHS BEFORE FROST

Adult and young birds are in peak feeding mode at this time of year, stocking up for migration or winter. Juvenile birds often still follow their parents to feeders, learning where to find food.



TRY THIS: KEEP YOUR FEEDERS FULL OF FRESH SEED AND SEE HOW MANY DIFFERENT SPECIES — BOTH ADULTS AND YOUNG — VISIT TOGETHER.

WHAT DID YOU SEE?



LIVING SQUAD

OCTOBER

AS AUTUMN SETTLES IN, OHIO'S "SNOWBIRDS" — LIKE DARK-EYED JUNCOS AND TREE SPARROWS — RETURN TO BACKYARD FEEDERS.

FUN FACT: THESE HARDY BIRDS MIGRATE SOUTH FROM CANADA EACH WINTER, BUT "SOUTH" FOR THEM IS OUR CHILLY BACKYARDS.



PURPLE FINCH

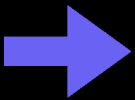
PINE SISKINS

RED-BREASTED UTHATCHE

JUNCOS

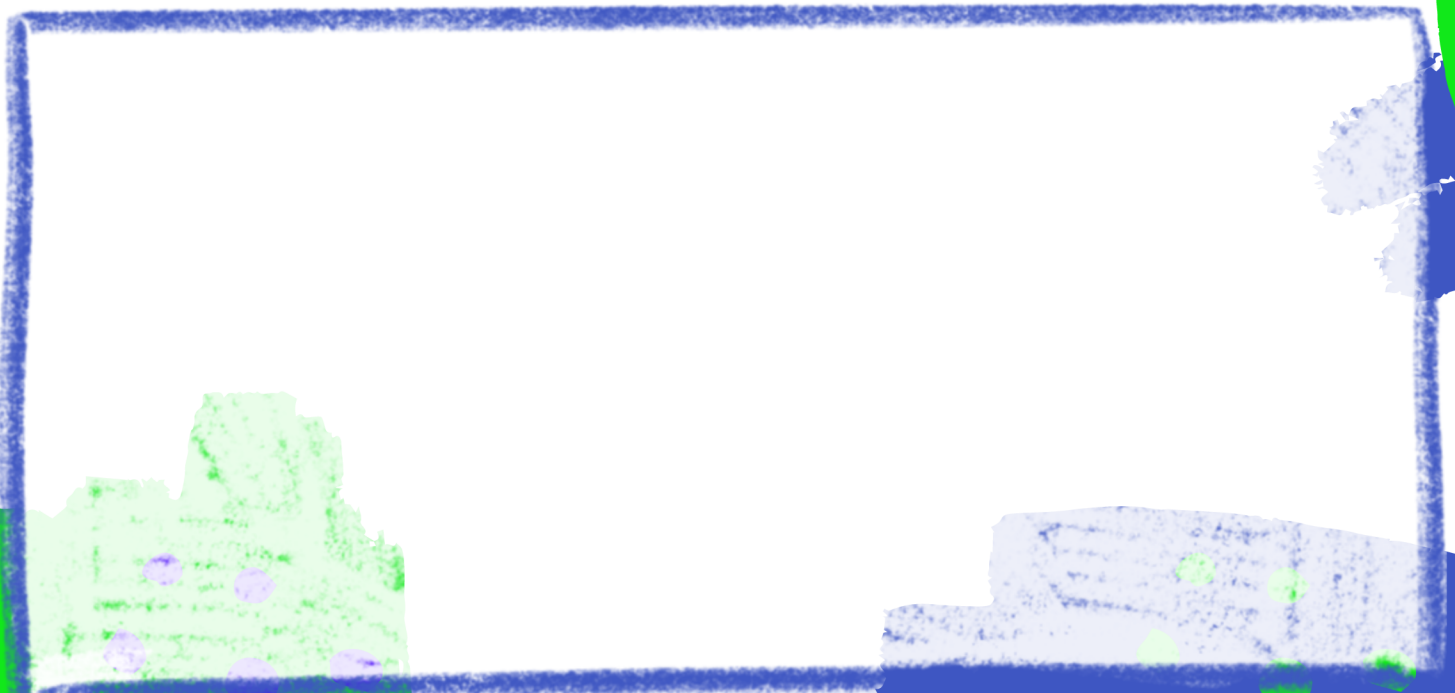


TRY THIS: WATCH FOR THE REASSEMBLY OF THE WINTER CARDINAL FLOCKS AND THE WINTER CHICKADEE FLOCKS



TRY THIS: PUT OUT YOUR GROUND FEEDERS TO WELCOME THE RETURN OF THE JUNCOS AND NOTE THE DATE THEY ARRIVE.

WHAT DID YOU SEE?



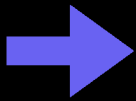
LIVING SQUAD

NOVEMBER

**WATCH FOR SPARROW ACTIVITY
UNDERYOUR FEEDER.**

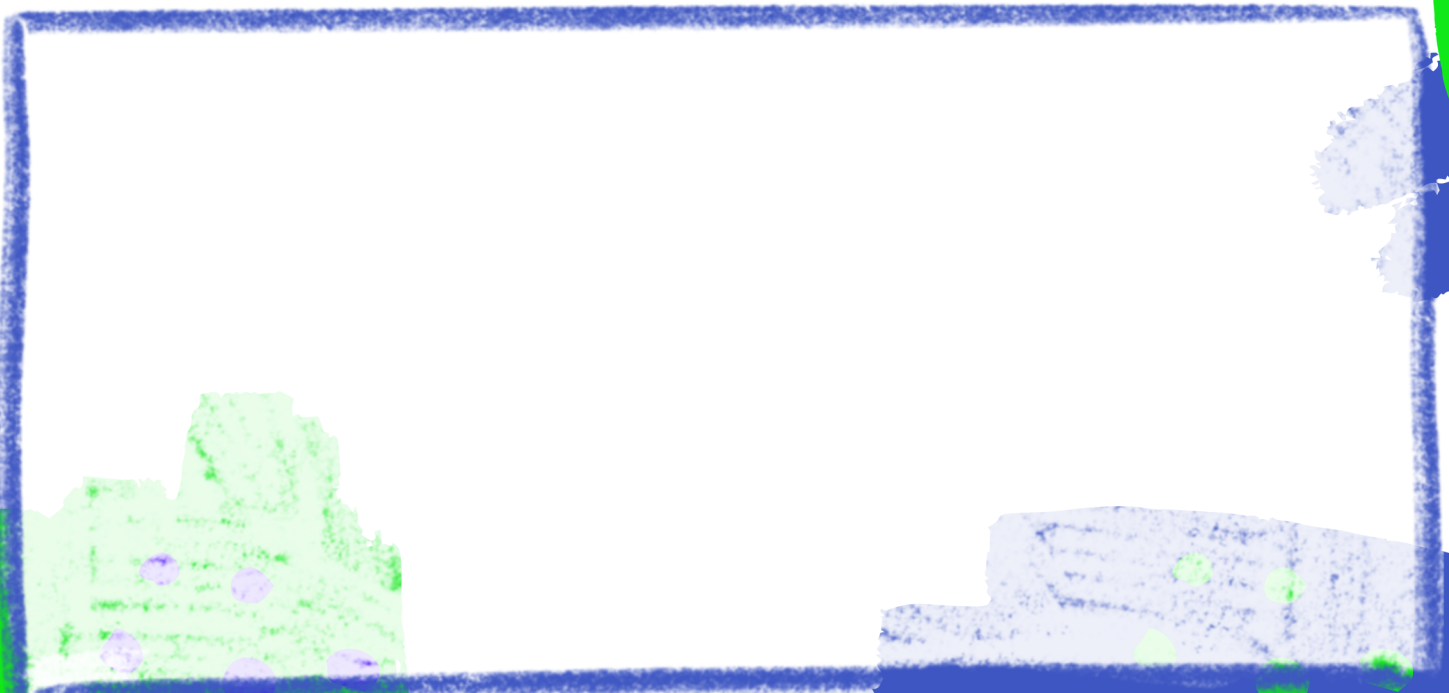
**FUN FACT: RUSTY-CROWNED CHIPPING
SPARROWS ARE ON THEIR WAY SOUTH.**

**RUSTY CROWNED AMERICAN TREE
SPARROWS ARE REPLACING THEM.**



TRY THIS: LOOK FOR WHITE-THROATED
SPARROWS AS WELL. ARE THERE ANY TOWHEES
SCRATCHING FOR SEED NEXT TO THEM?

WHAT DID YOU SEE?



LIVING SQUAD

DECEMBER

COLD WEATHER BRINGS HUNGRY WINTER VISITORS TO YOUR BACKYARD FEEDERS, FROM BRIGHT RED CARDINALS TO CHEERFUL CHICKADEES AND NUTHATCHES.

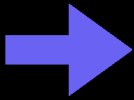


ENJOY THE VIEW AS CARDINAL FLOCKS AND CHICKADEE FLOCKS VISIT. USE A HEATED BIRD BATH TO ATTRACT A WIDE VARIETY OF BIRDS

MAKE SURE YOUR GROUND FEEDING TRAY IS IN PLACE AND FULL



FUN FACT: MANY WINTER BIRDS REMEMBER EXACTLY WHERE FEEDERS ARE LOCATED, RETURNING YEAR AFTER YEAR TO THE SAME SPOTS.



TRY THIS: IF YOU HAVE WINTER BLUEBIRDS, PROVIDE THEM WITH FREEZE-DRIED MEALWORMS OR BLUEBIRD NUGGETS.



WHAT DID YOU SEE?

